

Read&Write for Google Chrome

Tools To Support Reading,
Writing, Research and
Studying



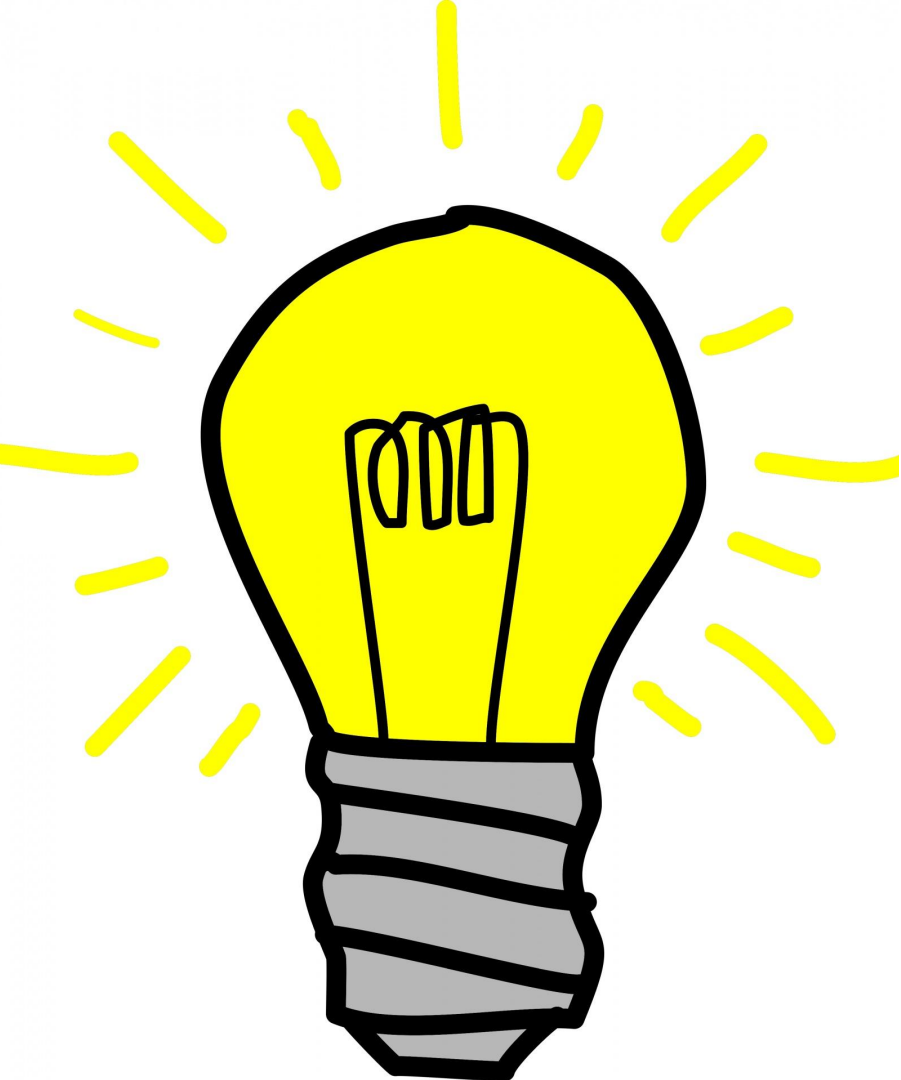
Introductions



Emily Cooper

Assistive Technology
Department





Learning Outcomes

- What is assistive technology and how can it help your child?
- Discover how your child can access **Read&Write for Google Chrome**, a tool to support reading, writing, studying and research.



What does the Assistive Technology (AT) Department do?



Assistive Technology Department

AT Department staff works to support students with Individualized Educational Plans (IEPs) or 504 plans

- Work with school teams to determine if tools are needed to meet IEP goals
- Provide technology and support
- Provide training to staff and families



Access for ALL

- All students can benefit from assistive technology tools
- San Diego Unified School District has provided access to Read and Write For Google Chrome for all students and staff in the district

What is
Read&Write for
Google Chrome?





Read & Write for Google Chrome is a tool that helps with reading, writing, studying and research, including:

- Text to speech, speech recognition, word prediction
- Text and picture dictionaries
- Simplification of web pages
- Translation of single words to 90 languages
- Highlighters and Vocabulary Charts

Where can I find this tool?

- Using the Chrome browser
- Log in with your child's district Google ID and password
- Example:
12345@stu.sandi.net



Sign in with your Google Account

A screenshot of the Google sign-in interface. It features a grey silhouette of a person's head and shoulders. Below this are two input fields: "Email" and "Password". A blue "Sign In" button is positioned below the fields. At the bottom left, there is a checked checkbox labeled "Stay signed in". At the bottom right, there is a link that says "Need help?".

Email

Password

Sign In

Stay signed in [Need help?](#)

Read and Write for Google Chrome toolbar is available in Google Docs, Slides and on the Web

The screenshot displays the Google Docs interface with the Read and Write for Google Chrome toolbar at the top. The toolbar includes icons for a dictionary, a picture dictionary, a translator, and a search engine. Below the toolbar, the main document area shows a text editor with the following content:

Earth is the third planet from the Sun and the densest planet in the Solar System. It is also the largest of the Solar System's four terrestrial planets. It is sometimes referred to as the "Blue Planet", the "Blue Marble", Terra or "Gaia".

According to evidence from sources such as radiometric dating, Earth was formed around four and a half billion years ago. Within its first billion years, life appeared in its oceans and began to affect its atmosphere and surface, promoting the proliferation of aerobic as well as anaerobic organisms and formation of the atmosphere's ozone layer. This layer and Earth's magnetism shielded the most life-threatening parts of the Sun's radiation, so life was able to flourish as well as in water. Since then, Earth's position in the Solar System, its physical properties and its geological history have allowed life to persist.

Earth's lithosphere is divided into several rigid segments, or tectonic plates, that move across the surface over periods of many millions of years. Over 70% percent of the surface is covered with water, with the remainder consisting of continents and islands which together have many lakes and other sources of water that contribute to the hydrosphere. Earth's poles are mostly covered with ice that is the solid ice of the Antarctic ice sheet and the sea ice of the polar ice packs. The planet's average

Two floating windows are visible: a "Dictionary" window on the left and a "Picture Dictionary" window on the right. The "Dictionary" window shows the definition of "Earth" as a noun: "the 3rd planet from the sun; the planet we live on; 'the Earth moves around the sun'; 'he sailed around the world'", "the abode of mortals (as contrasted with Heaven or Hell); 'it was hell on earth'", and "The planet that we live on;". The "Picture Dictionary" window shows the word "Earth" with four icons: a stick figure walking on a globe, a globe, a globe with a blue 'E', and a globe with a green plant growing on it.



***How to use Read&Write
to Support Writing***

Settings



Settings

Change voice, rate of text, language, word prediction options and more.

Tools for Writing



Word Prediction

Word prediction suggests correct spellings of words after only a few letters are typed.

[Video Link: How to use the Word Prediction feature](#)

Tools for Writing



Picture Dictionary

Picture dictionary displays images for selected words to support fluency and understanding.

Tools for Writing

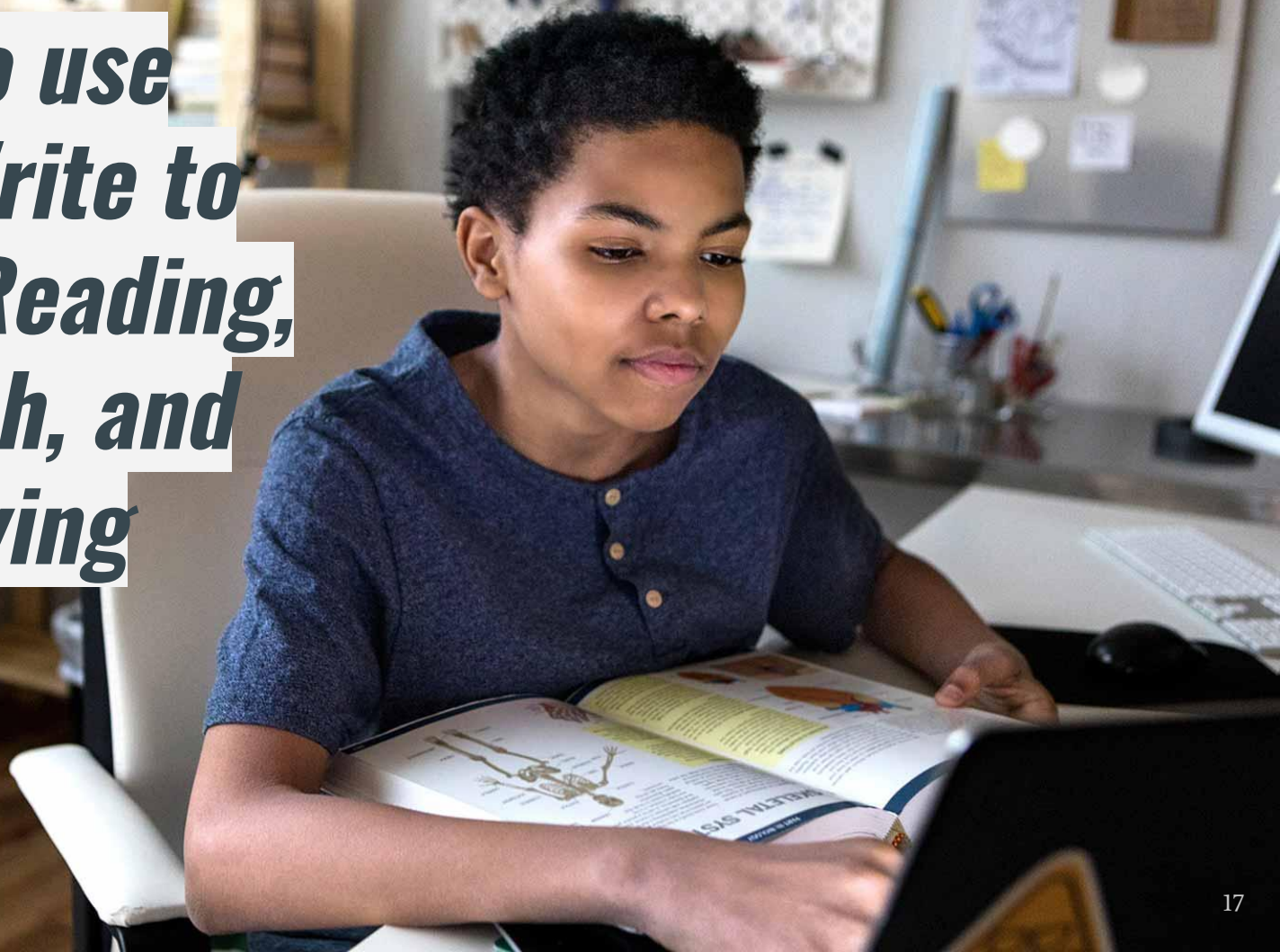


Talk & Type

Speech recognition (AKA voice typing, dictation) is technology converts spoken words into digital text on a screen.

[Video Link: How to use the Speech Recognition feature](#)

***How to use
Read&Write to
Support Reading,
Research, and
Studying***



Tools for Reading



Simplify Feature

- Removes clutter from the web pages and places the simplified text into a new tab.
- Display control allows you to control how text is displayed. Change the:
 - font
 - font size
 - color
 - spacing of text
- You can also cover (or mask) parts of the screen to lessen distractions while reading.

[Video: How to Simplify Text](#)

Tools for Reading *(continued)*



Text-to-Speech

Hear words, passages or whole documents read aloud with easy to follow dual color highlighting

[Video: How to use text-to-speech](#)

Tools for Reading *(continued)*



Dictionary Supports

- Provides definitions to improve comprehension and writing.
- Talking dictionary provides definitions for highlighted words.
- Picture dictionary displays images to support fluency and understanding.

[Video: How to use Dictionary Supports](#)

Tools for Reading *(continued)*



Translation

Allows single words to be translated in over 90 different languages. Read documents aloud in many languages.

[Video: How to use the Translation feature](#)

Tools for Research and Studying



Vocabulary

Create a vocabulary chart from individual words or terms. Vocabulary charts include accessible definitions and images from the picture dictionary.

[Video: How to use the Vocabulary feature](#)

Tools for Research and Studying



Highlighting

Use the the Highlighting tool to do research and to extract key information from Google Docs and websites.

[Video: How to use the Highlighting feature](#)

Read&Write for Google Chrome is available for your child to use starting today!



How can my child and I get more support/training?



-
- Click on links in the Resources section of this presentation to watch additional video tutorials and for more information
 - Work with your IEP team to match necessary features with your child's individual needs
 - Site staff can contact AT Department staff for additional support as needed



[Getting Started with Read and Write for Google Chrome](#)
[Online Learning Resources: Read and Write for Google Chrome](#)
[Read and Write for Google Chrome YouTube Playlist](#)
[Read and Write for Google Chrome Training Agenda](#)

Got Questions?
atdept@sandi.net

